



Construction of the Public in Marine Spatial Planning

Paul Manson - Hatfield School of Government
Portland State University

ASPA Annual Meeting - March 10, 2019

email: mansonp@pdx.edu — twitter: [@paulonabike](https://twitter.com/paulonabike)



Intergovernmental Oceanographic Commission
Manual and Guides No. 53, ICAM Dossier No. 6

MARINE SPATIAL PLANNING

A Step-by-Step Approach toward Ecosystem-based Management

Developed with the financial support of



Additional support was provided by WWF-International and the government of Belgium.



The White House

Office of the Press Secretary

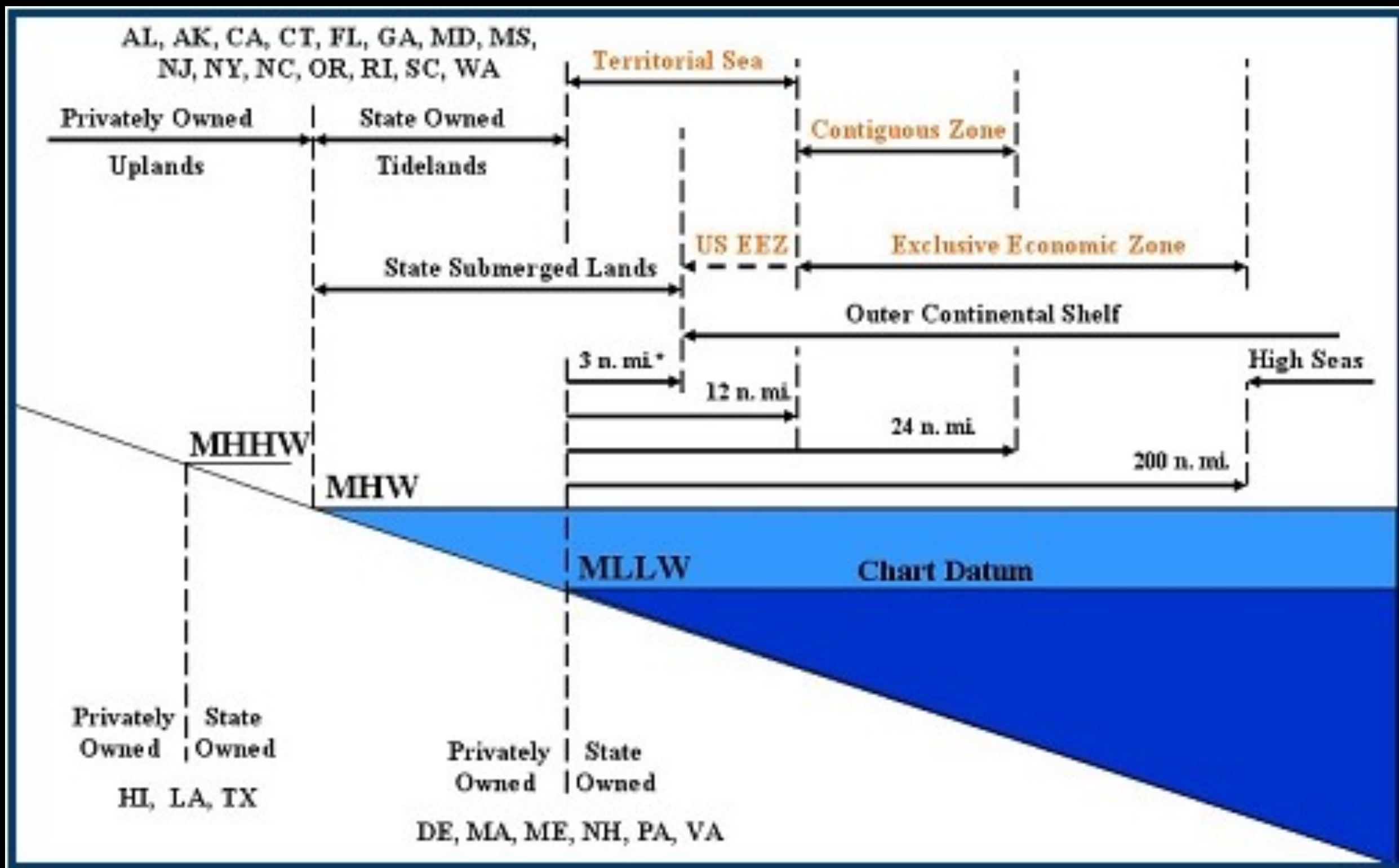
For Immediate Release

July 19, 2010

Executive Order 13547 --Stewardship of the Ocean, Our Coasts, and the Great Lakes

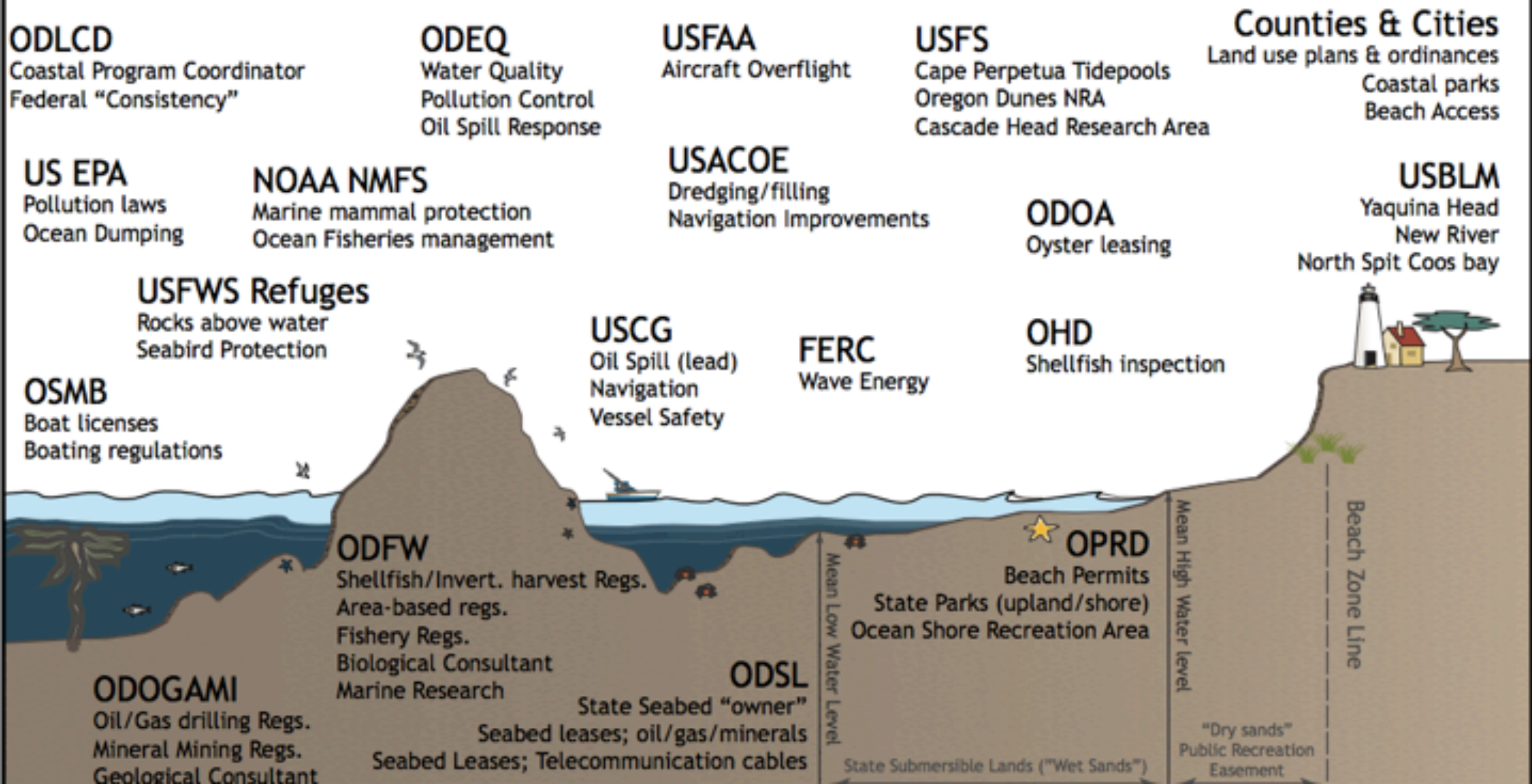
By the authority vested in me as President by the Constitution and the laws of the United States of America, it is hereby ordered as follows:

Section 1. Purpose. The ocean, our coasts, and the Great Lakes provide jobs, food, energy resources, ecological services, recreation, and tourism opportunities, and play critical roles in our Nation's transportation, economy, and trade, as well as the global mobility of our Armed Forces and the maintenance of international peace and security. The Deepwater Horizon oil spill in the Gulf of Mexico and resulting environmental crisis is a stark reminder of how vulnerable our marine environments are, and how much communities and the Nation rely on healthy and resilient ocean and coastal ecosystems. America's stewardship of the ocean, our coasts, and the Great Lakes is intrinsically linked to environmental sustainability, human health and well-being, national prosperity, adaptation to climate and other environmental changes,



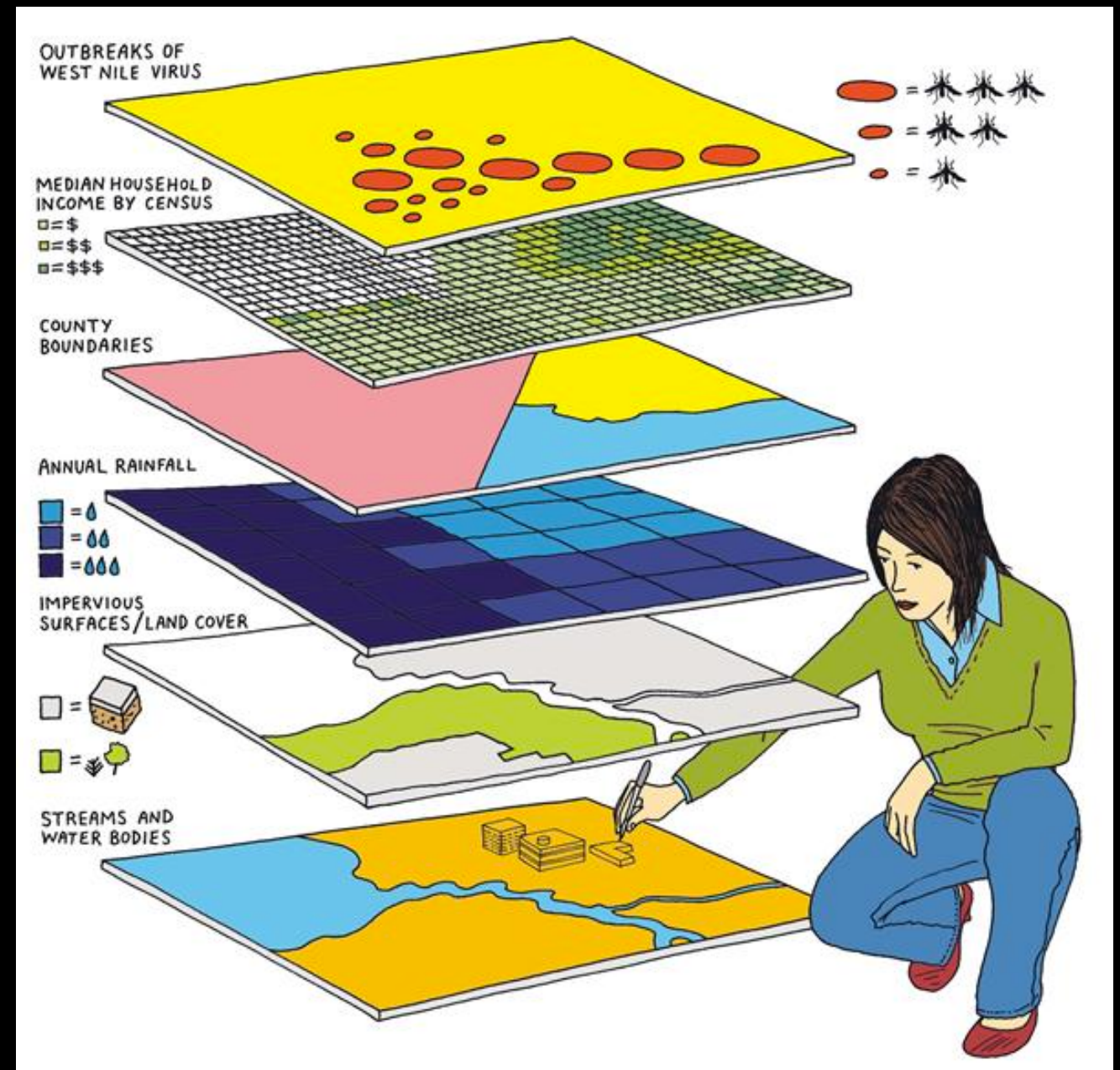
Source: NOAA Coastal Program

in Oregon's Territorial Sea and Ocean Shore

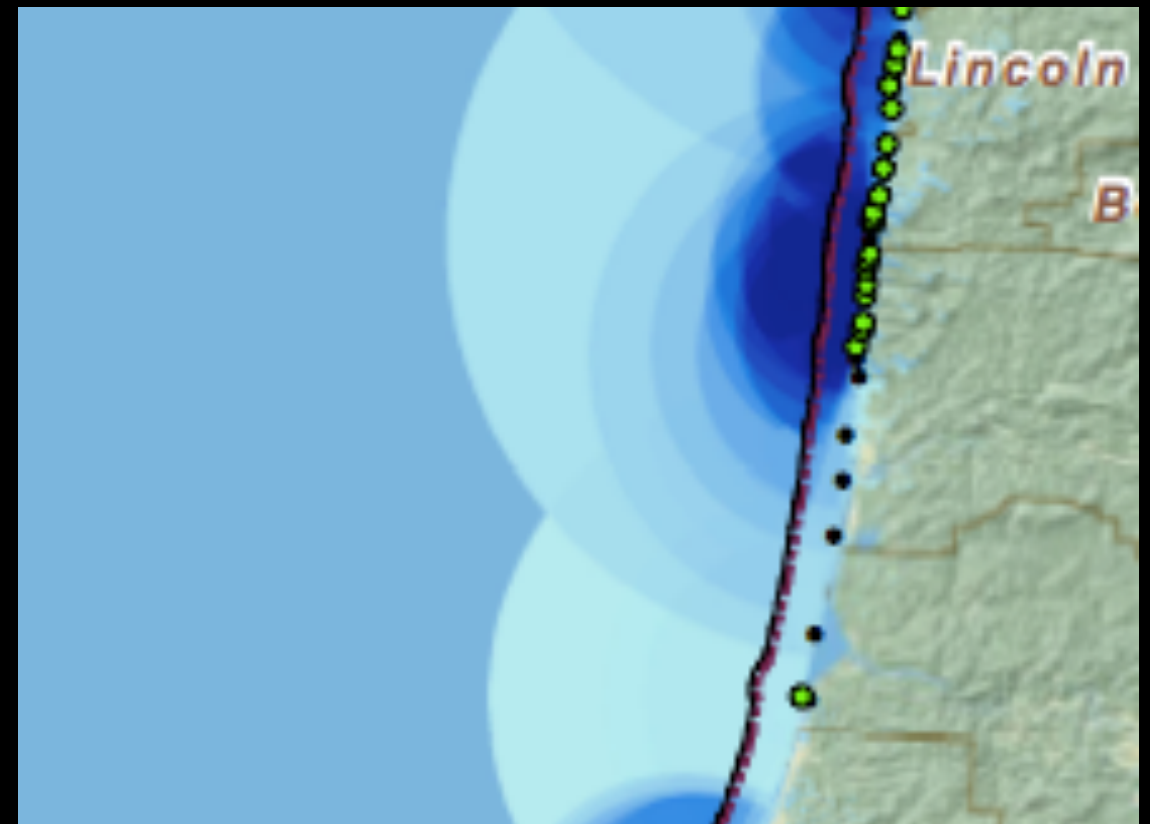
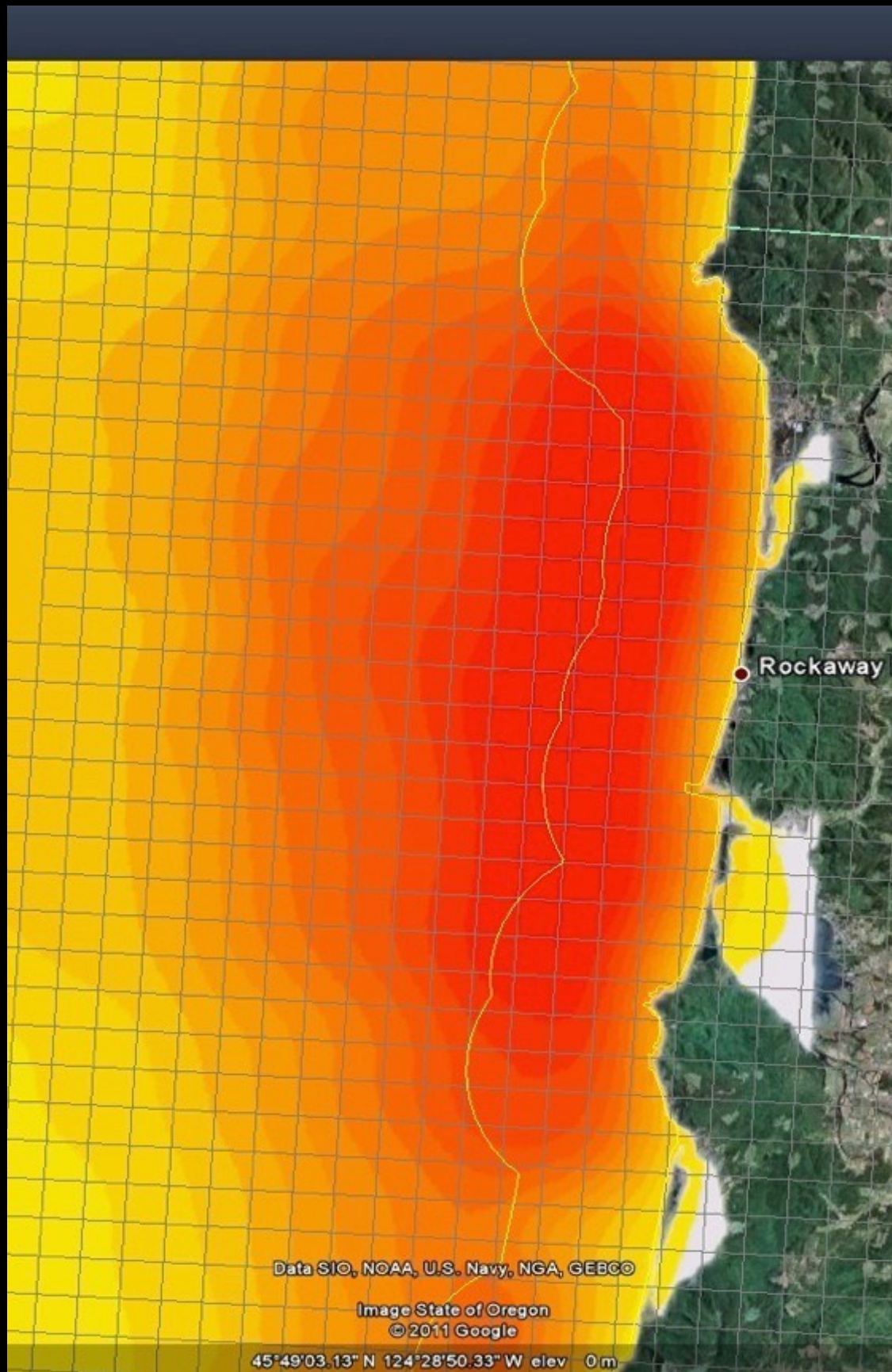


Assembling PPGIS

- Solicit and Collect “Public(s)” as Data
- Assemble and Aggregate
- Coastal and Marine Spatial Planning (CMSP) application



Source: ESRI - <http://www.architectmagazine.com/organization/esri>

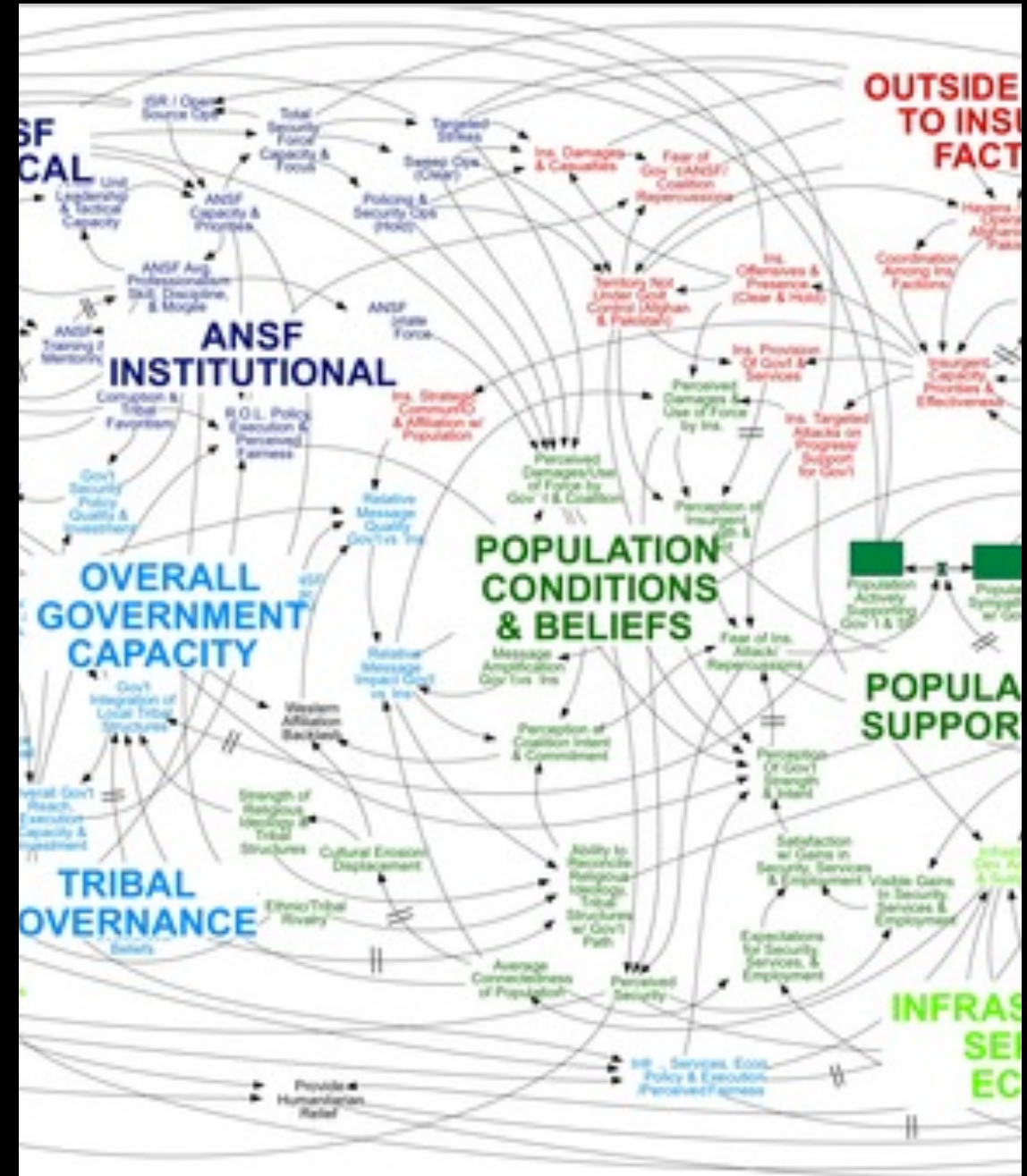


Models to Make Sense of PPGIS

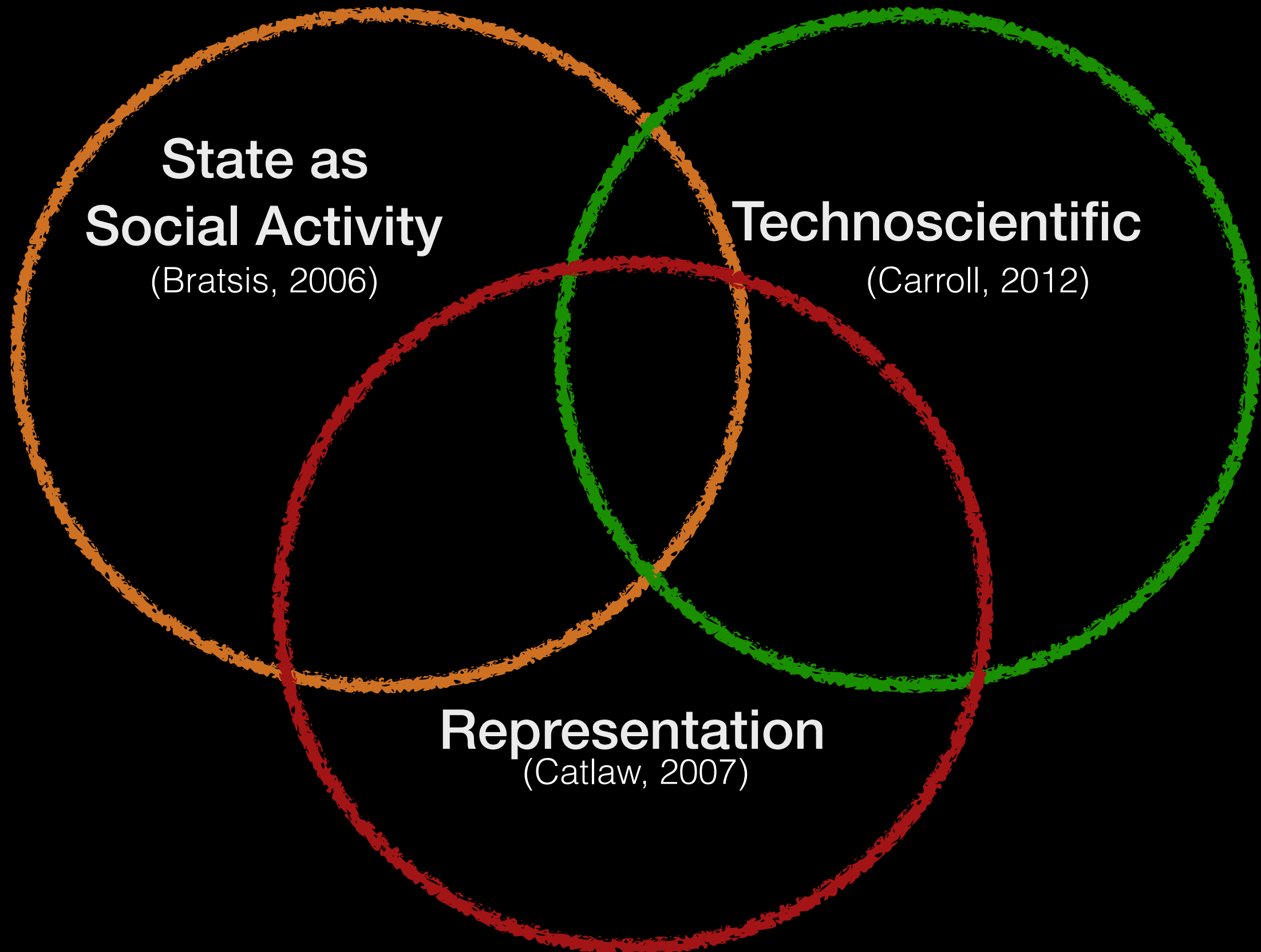
- **Public Involvement Approach**
Substantive, Normative, Instrumental (Fiorino 1990)
- **Collaborative Governance**
Good Politics or Good Policy?
(Ansell and Gash 2008 *but....* Layzer 2008)
- **Expertise of GIS and Public Input**
Critical GIS: New medium, same dynamics?
(Pickles 1995, Duncan 2006)

Some Problems Though...

- How are knowledge claims and politics settled?
- What is the public?
Who knows it?



TechnoGovernance



State as a Social Activity

Thus, the state exists when people view themselves as members of a political community...

...and when people view their society as divided into two registers, the public and private.....

— Bratsis 2006

Purity and Representation

- Key State Activity:
Purification of the Public
(Catlaw 2007)
- Defining the Public is
Defining State Authority
- Opening the sovereign
and the 'Public' to inquiry



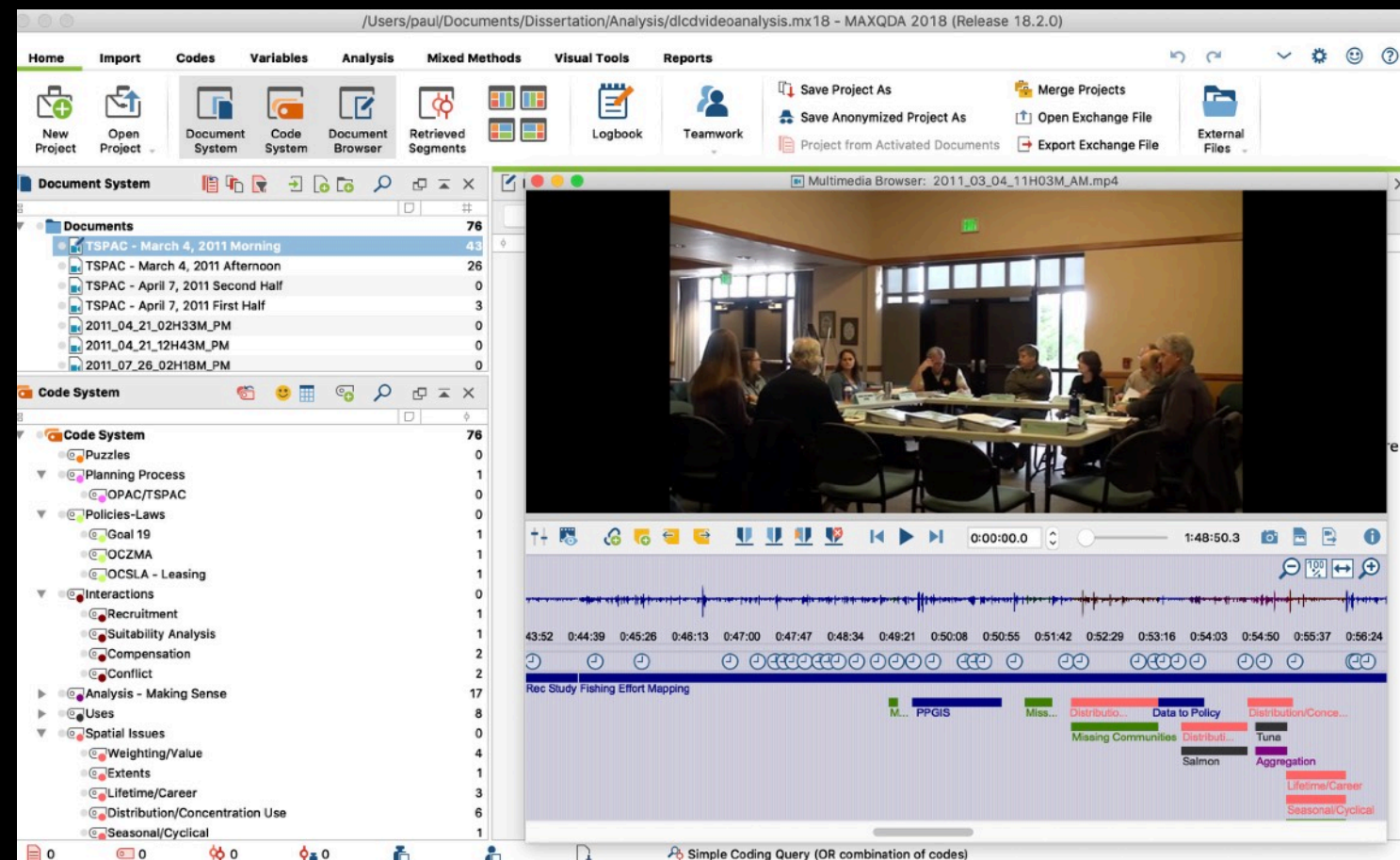
Technoscience

- Based on “Engine Science” - the automation of controls (Carroll 2012)
- Carroll’s medium: Water
New medium: Data

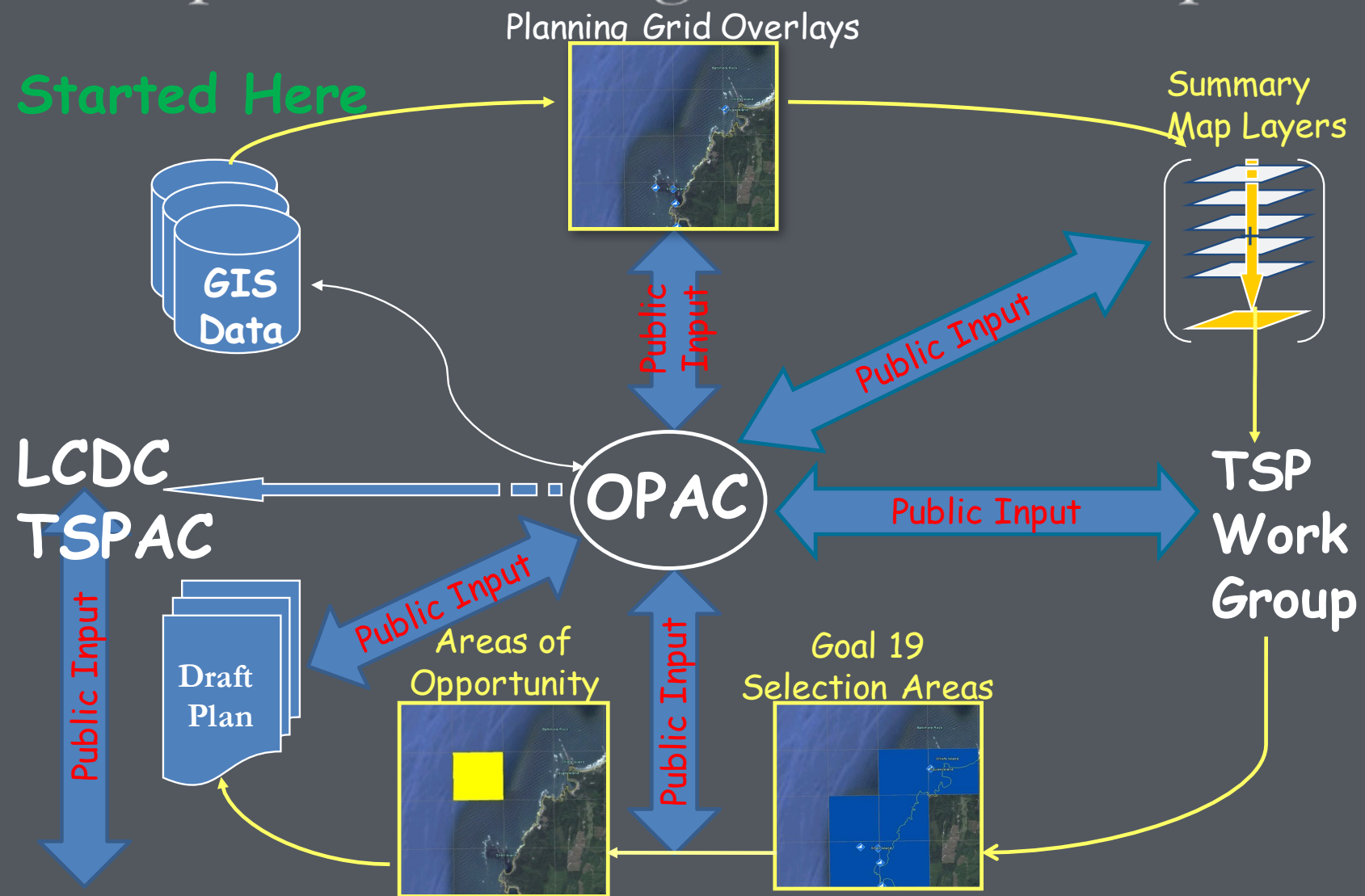


Methods and Data

- Interviews with two key stakeholder committees
- Recorded committee meetings
- Open and axial coding



Spatial Planning Feedback Loop



Source: Oregon Department of Land Conservation and Development

Data Layers Intersected with the Planning Grid

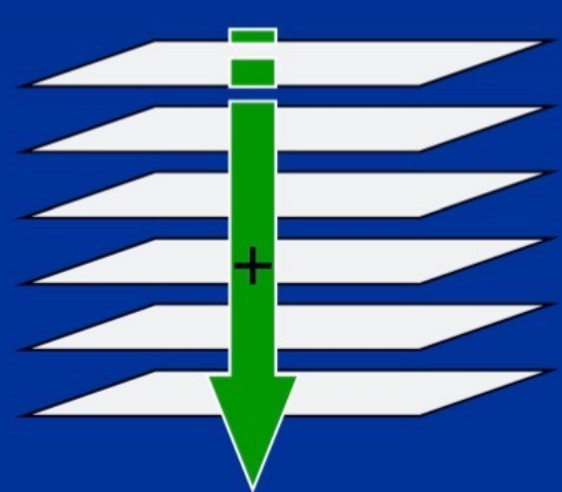


Areas of Opportunity
(to be evaluated)



Goal 19 Criteria

- Areas of Biological or Ecological Importance.
- Identify Areas of Importance to Fisheries
- Existing Uses or Areas for special management.



B&E Exclusion Areas



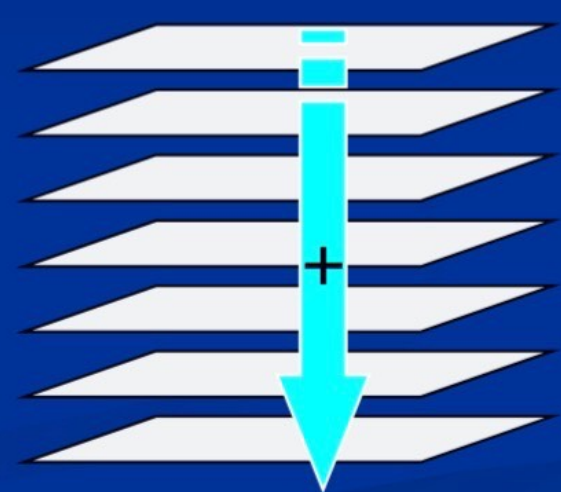
+



Fishery Exclusion Areas



+



Current Use or Management
Exclusion Areas



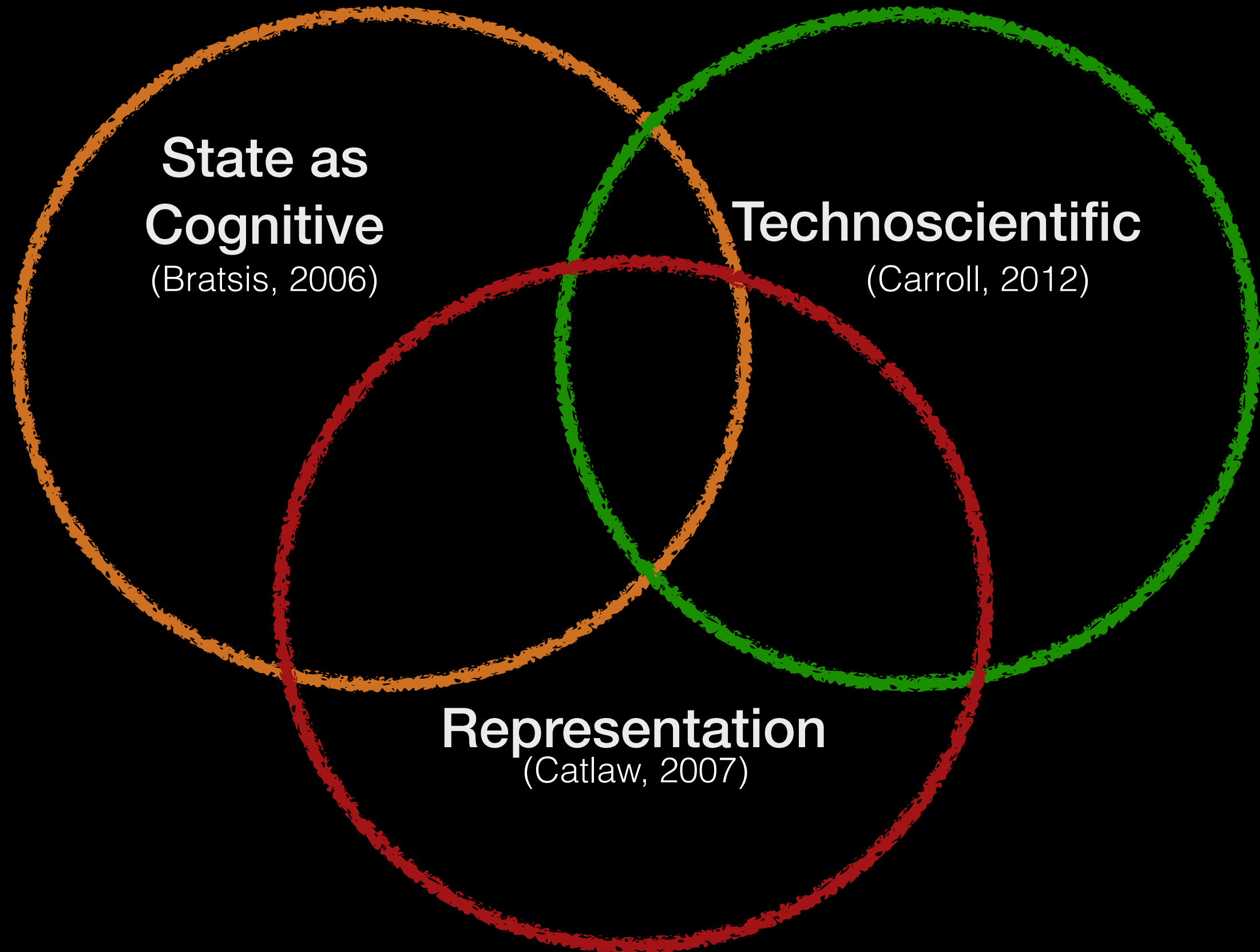
+

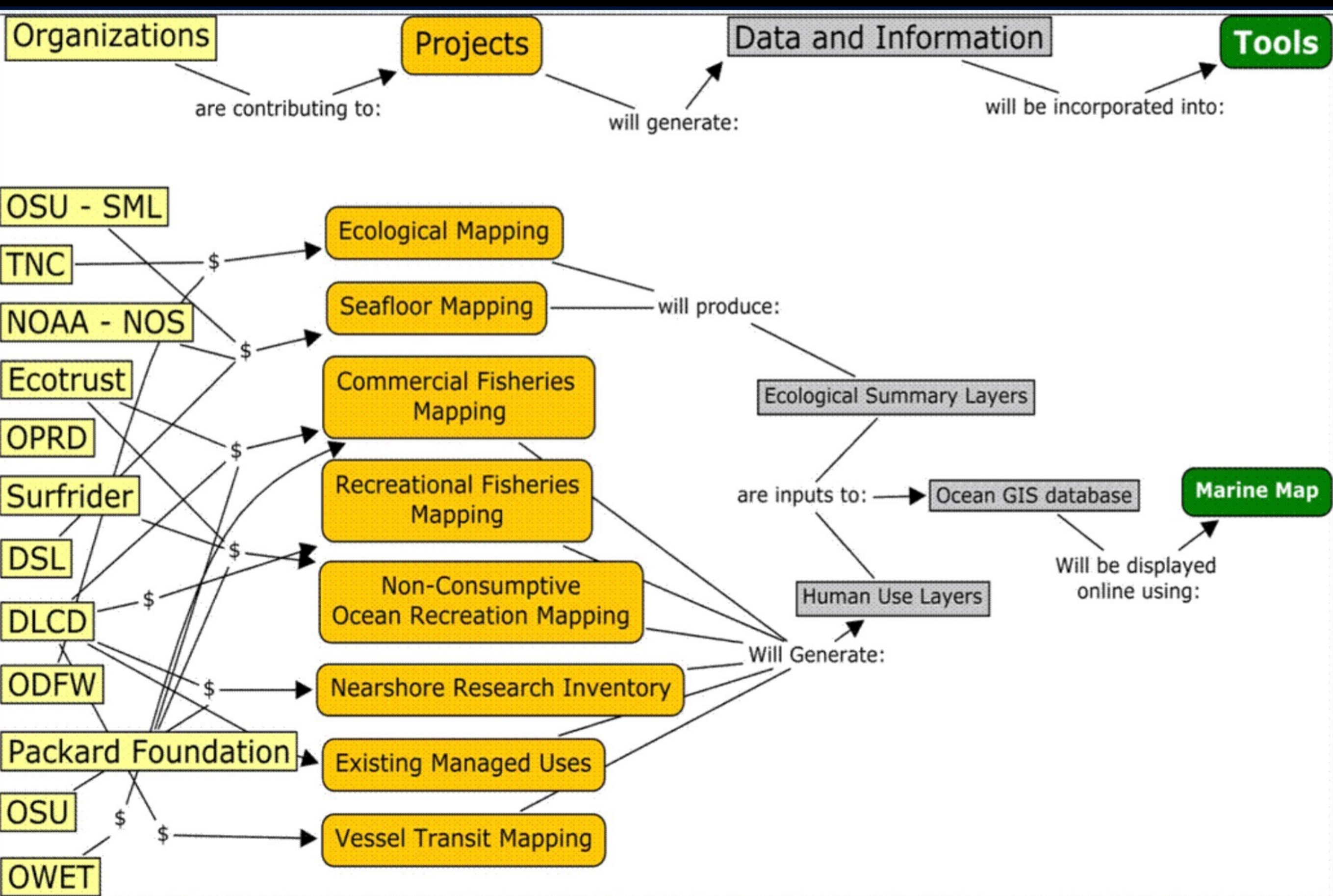
=



Areas of Protection under Goal 19

TechnoGovernance

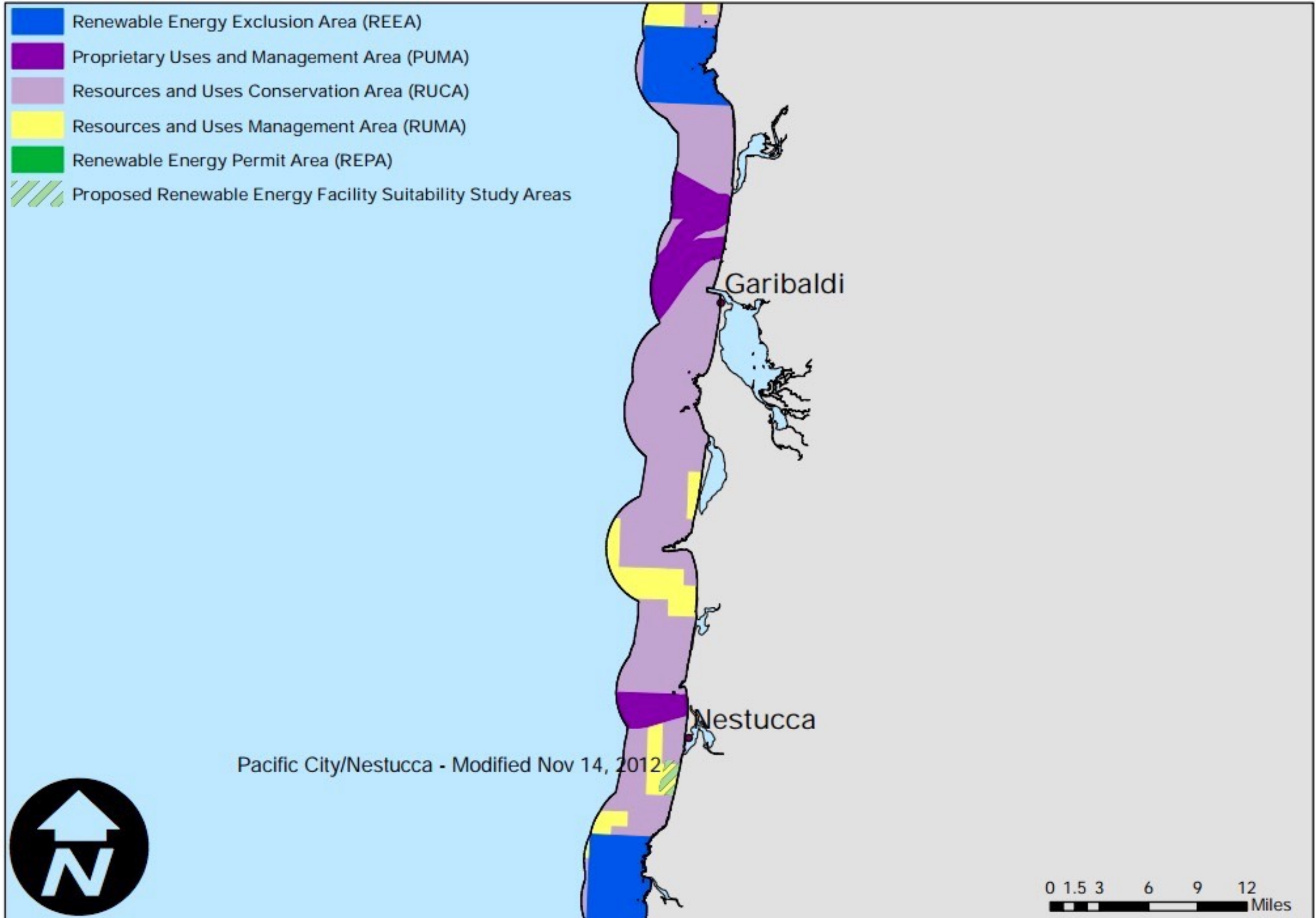




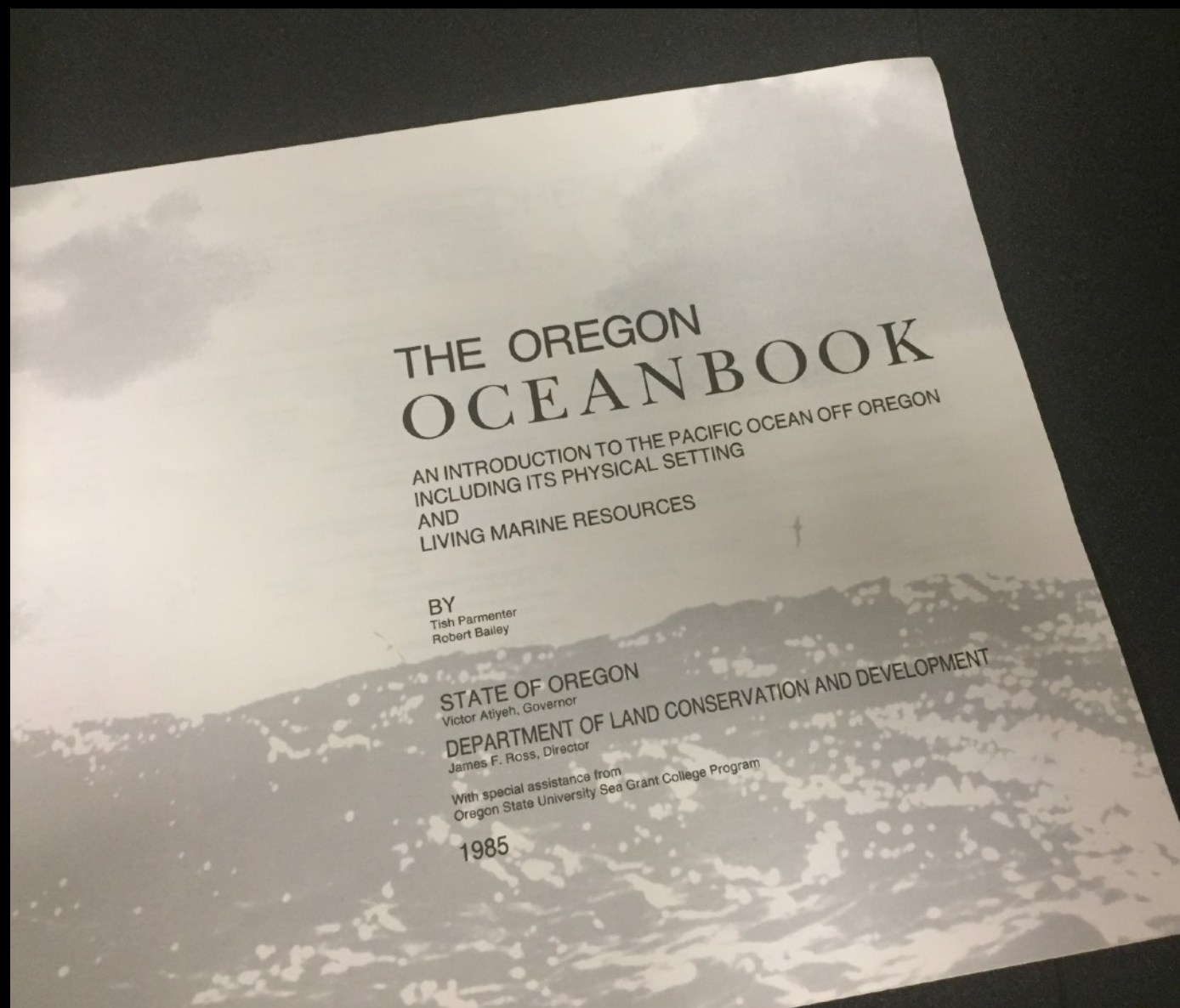
Source: Oregon Department of Land Conservation and Development

TSP Draft Maps

These maps are based on identified Goal 19 Resources and Uses and represent the DLCD staff recommendation to LCDC. To read area definitions and standards, please see TSP Part 5.



Questions? Please contact Paul Klarin (paul.klarin@state.or.us)



Paul Manson
Portland State University

mansonp@pdx.edu
@paulonabike



This material is based upon work supported by National Science Foundation IGERT Grant #0966376: Sustaining Ecosystem Services to Support Rapidly Urbanizing Areas. Any opinions, findings, and conclusions or recommendations expressed in this material are those of the authors and do not necessarily reflect the views of the National Science Foundation.